

# CATALOGUE

# **SOGA DIODE LASER**

# **ILASER I PRO**

## DENTAL EQUIPMENT



# CATALOGUE

## 03 WHY SOGA DIODE LASER - ILASER I PRO ?

---

## 04 SOGA Diode Laser ILASER I PRO

Profile Product Soga Diode Laser ILaser I Pro

---

## 10 CUSTOMER SUPPORT

Monday - Friday : 8am - 5pm. (GMT +7)  
Saturday : 8am - 1pm. (GMT + 7)

---

# OVERVIEW *SOGA*<sup>®</sup>

## WHY SOGA DIODE LASER ILASER I PRO?

**The SOGA ILaser I Pro** is a cutting-edge, multi-wavelength dental laser system designed as an intelligent clinical assistant to enhance treatment efficiency. This device integrates advanced diode laser technology with an Android-based operating system to deliver precise control and optimal clinical outcomes.

### Key Advantages:

- **Integrated Multi-Wavelength Technology:** Combines 450nm, 650nm, 980nm, and optional 1064nm wavelengths to cover everything from soft-tissue surgery to teeth whitening in a single device.
- **Superior Clinical Versatility:** Supports 8 dental specialties and 17 clinical applications, including endodontics, periodontics, and TMJ pain therapy.
- **Smart Operating System:** Features an Android-based system with a high-performance multi-core CPU, allowing for WiFi updates and intelligent safety monitoring.
- **User-Friendly Interface:** Equipped with a large 11.6-inch high-resolution display and preset programs that simplify complex procedures.
- **Enhanced Mobility & Power:** Powered by a 12,000mAh lithium battery for long-lasting use and includes a wireless foot pedal for a cable-free workspace.
- **Maximum Safety & Hygiene:** All critical accessories, such as the metal fiber tips and handpiece sleeves, are designed for high-temperature sterilization to prevent cross-infection.
- **Faster Learning Curve:** Includes a Case-Based Learning Guide to help practitioners quickly master advanced laser techniques.

**SOGA**<sup>®</sup>

# ILASER I PRO

Multi-wavelength Dental Laser

450nm | 650nm | 980nm | 1064nm (by request)

**RP.77.000.000**

The Intelligent Dental Clinic Assistant  
More Efficient Treatment

# MULTIPLE SPECTRUM PRECISION CONTROL

Three independently adjustable wavelengths 450 nm, 650 nm, 980 nm enable flexible power combinations for diverse clinical needs, allowing you to craft expert-level modes with ease.

## ACCESSORIES

Equipped with metal fiber tips and aluminum alloy sleeves, all components support high-temperature sterilization to prevent cross-infection.

The handpiece is fully replaceable, supporting flexible use for various clinical applications.



\*Additional accessories



### Android System

Supports WiFi, online upgrade capability.



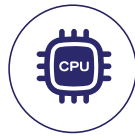
### Case-Based Learning Guide

Shortens the learning curve and quickly master.



### Multi-Language Support

Chinese, English, Spanish, French, Russian.



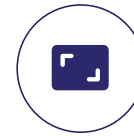
### High-Performance Multi-Core CPU

Intelligent monitoring, safety and high efficiency.



### Long Battery Life

12,000mAh.



### High-Resolution Display

Clearer images.



### Preset Programs & Custom Settings

Supports preset parameters.



### Advanced Cooling System

Prevents overheating for equipment.

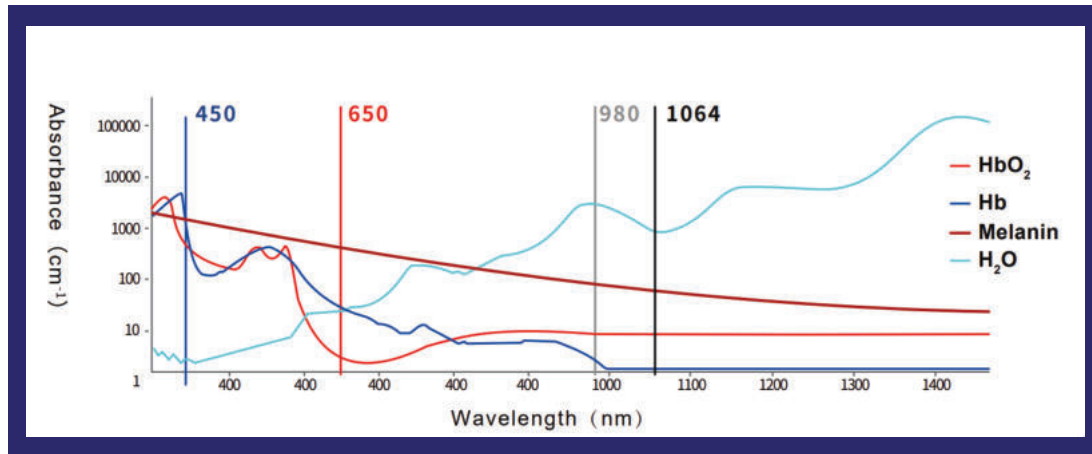


### Wireless Foot Pedal, Long Standby

Operates for over 3 months on a full charge.



# UNIQUE MULTI-WAVELENGTH DENTAL LASER



## ● Blue Wavelength – 450 nm

- Teeth Whitening
- Provides hemostasis with high photon energy
- Activates whitening gel molecules efficiently
- One of the most efficient wavelengths among dental diode lasers

## ● Red Wavelength – 650 nm

- Photobiomodulation (PBM)
- Suitable for Low-Level Laser Therapy (LLLT)
- Accelerates wound healing
- Enables pain-free dental treatment

## ● Infrared Wavelength – 980 nm

- Soft-Tissue Surgery, Periodontal & Endodontic Applications
- Achieves hemostasis even at very low power settings
- Strong antibacterial and anti-inflammatory effects
- Supports High-Power Laser Therapy (HPLT)
- Effective for TMJ pain reduction

## ● Near-Infrared Wavelength – 1064 nm (by request)

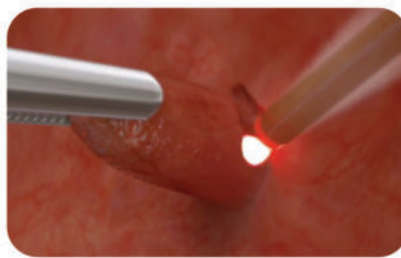
- Periodontal & Deep Soft-Tissue Applications
- Strong absorption by pigments and hemoglobin
- Strong photothermal effects and excellent coagulation
- Superior sterilization. Deeper action

## WIDE SCOPE OF APPLICATION

**Covering 8 dental specialties and 17 clinical applications**, with multifunctional efficiency, ensuring safe and precise in every procedure. It is designed to enhance your skills and help you achieve operational excellence.



Esthetics (Teeth Whitening)



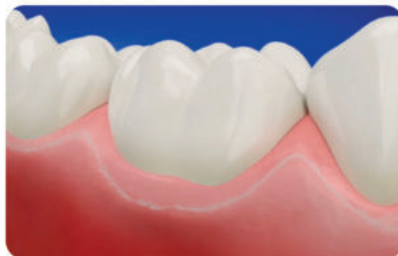
Oral Surgery



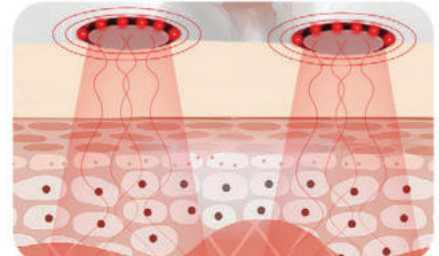
Prosthodontics



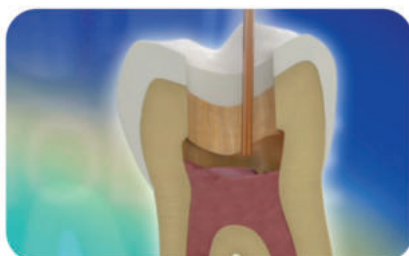
Implant Restoration



Periodontal Therapy



Low-Level Laser Therapy (LLLT)



Endodontics



Pediatric Dentistry

## Technical Specification

Laser Wavelengths	: 450nm / 650nm / 980nm/ 1064nm (by request)*
Maximum Power	: 450nm : 5W 650nm : 200mW 980nm : 15W *1064nm : 15W
Emission Mode	: CW / Pulse
Laser Medium	: InGaAsP Diode
Fiber Diameter	: 200/400um
Pulse Width	: 10us~900ms
Max Frequency	: 50kHz
Display	: 11.6-inch Screen
Dimensions	: 278mmx170mmx220mm
Weight	: 2.85kg
Aiming Beam	: 650nm
Battery	: 12,000mAh Lithium Battery



# CONTACT US

Together, We Craft Beautiful Smiles  
Your Clients, Our Exceptional Dental Solutions

We value your feedback and are here to assist you. Please don't hesitate to get in touch with us for any inquiries, suggestions, or concerns. We're committed to providing you with excellent service.



INTEGRA BEST DEAL  
0878-6829-7901



INSTAGRAM  
[@integra\\_dental.id](https://www.instagram.com/integra_dental.id)



EMAIL  
[sales@integrameditama.co.id](mailto:sales@integrameditama.co.id)

