

**CATALOGUE**  
**AURORA SOGA**  
**WATER ERBIUM YAG LASER**  
**DENTAL EQUIPMENT**



# CATALOGUE

**03**

## **WHY DENTAL AURORA SOGA WATER ERBIUM YAG LASER?**

---

**04**

### **Aurora Soga Water Erbium YAG Laser**

Profile Product Aurora Soga Water Erbium YAG Laser

---

**12**

### **CUSTOMER SUPPORT**

Monday - Friday : 8am - 5pm. (GMT +7)  
Saturday : 8am - 1pm. (GMT + 7)

---

# OVERVIEW *SOGA*<sup>®</sup>

## Why Dental AURORA SOGA WATER ERBIUM YAG LASER?

**World's First Hybrid Technology:** Combines Er:YAG (2940nm) and Diode lasers (980nm, 650nm, 450nm) in a single device.

**Comprehensive 5-in-1 Solution:** Covers hard and soft tissue, periodontal management, implantology, aesthetics, and pain control.

**Superior Clinical Efficiency:**

- Removes crowns and veneers 300% faster (in just 60–120 seconds).
- Reduces endodontic irrigation time by 50% with improved sterilization.
- Increases bonding strength by over 20% through non-contact enamel etching.

**Enhanced Patient Experience:** Provides minimally invasive, vibration-free, and heat-free treatments to improve comfort and healing.

**Smart & Maintenance-Free Design:**

- **Built-in Er:YAG Laser:** Eliminates the bulky articulated arm, ensuring stable energy output and low maintenance.
- **Intelligent Interface:** Features an 11.6-inch Android touch screen with 29 preset protocols and animated guidance.
- **Cloud Support:** Offers remote smart diagnosis and real-time system updates to minimize downtime.

**Smart Investment:** Saves clinic space and reduces the need for multiple device investments.

# **AURORA SOGA WATER ERBIUM YAG LASER**

Er:YAG: 2940nm

Diode: 980nm, 650nm, 450nm

**RP. 799.000.000**

**FOR SOFT TISSUE &  
HARD TISSUE**



## ? WHY CHOOSE AURORA SOGA?

### ONE DEVICE, FIVE CORE FUNCTIONS

Covering hard and soft tissue treatment, periodontal management, implantology, aesthetic dentistry, and pain control



Saves space and investment



Comprehensive clinical applications



Multi-wavelength precise treatment



Improves patient comfort

## ↔️ WIDE RANGE OF CLINICAL INDICATIONS

Indication Category	Indication	2940nm	980nm	650nm	450nm
RESTORATIVE	Crowns and Veneer Removal	✓			
	Enamel Etching	✓			
	Caries Removal	✓			
	Gingival Retraction	✓	✓		✓
IMPLANT	Uncover Submerged Implants	✓	✓		✓
	Peri-Implantitis	✓			
ENDO	Access Opening	✓			
	Laser Endodontic Irrigation	✓			
	Laser Pulpotomy	✓			
	Root Canal Disinfection		✓		
	Apex Cutting	✓			
PERIO	Periodontal Pocket Debridement	✓			
	Gingivectomy	✓	✓		✓
	Gums Pigmentation Removal	✓			
	Calculus Removal	✓			
	Perio Germ Reduction		✓		
	Bone Remodeling	✓			
OTHERS	Soft Tissue	✓	✓		✓
	Hemostasis		✓		✓
	Angioma		✓		✓
	Incision (e.g., abscess)	✓	✓		✓
	Frenectomy	✓	✓		✓
	Photobanding of Ulcer		✓		
	Desensitization		✓		
	Pain Therapy			✓	
	Promote Wound Healing			✓	
	Relieve the Burning Mouth			✓	
	Teeth Whitening(450nm)				✓
Laser Photodynamic Therapy			✓		



## TECHNICAL HIGHLIGHT

### Er:YAG Laser Handpiece

**Built-in laser** - Without articulated arm, stable output, no energy loss

**Minimal maintenance** - Independent handpiece, few consumables, low maintenance cost

**520nm green aiming beam** - Precise treatment, safe and controllable

**Independent water-air adjustment** - Flexibly adapts to different treatment protocols



### 11.6-inch Capacitive Touch Screen

**High-definition large-screen touch control**-

Sensitive, smooth operation

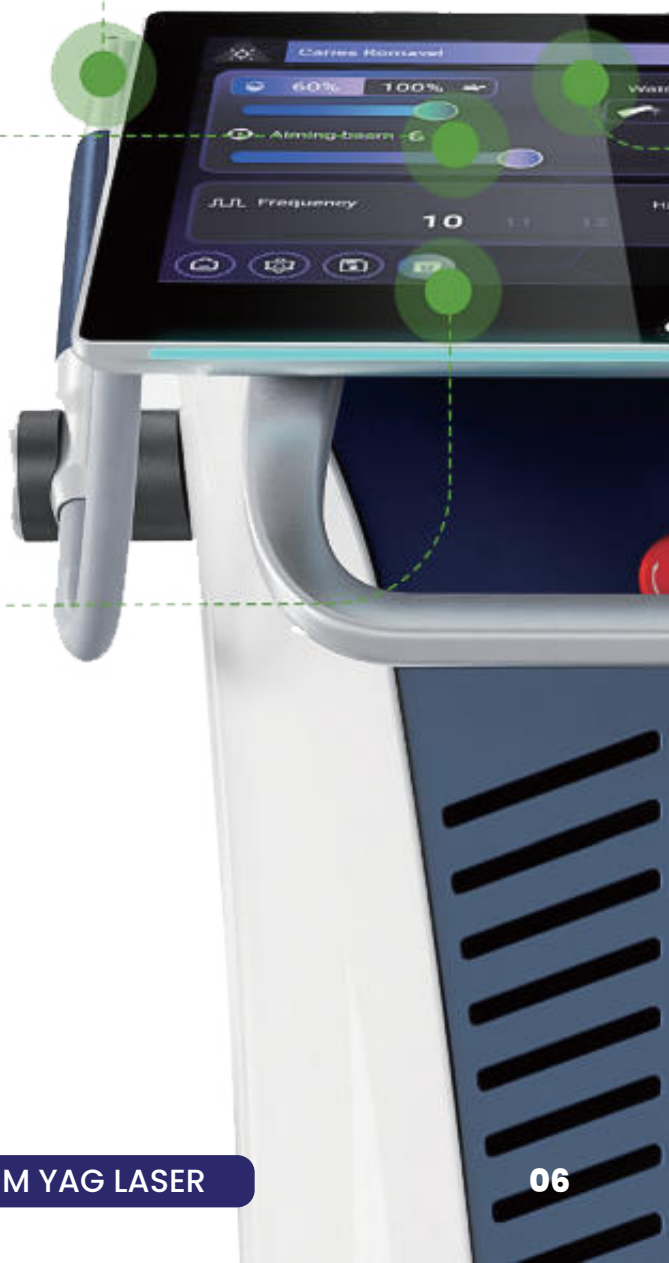


### Animated Operation Guidance

**Intuitive demonstration, quick to get started**



\*Above: Animated demonstration of peri-implant debridement



### Diode Laser Handpiece

**Ergonomic design** - Compact and flexible, smoother operation  
**Multiple handpieces** - Fully covering clinical applications  
**Detachable handpiece** - Autoclavable, safe operation



### Intelligent Interconnection System

**29 preset treatment protocols** - One-button activation, standardized operation  
**Android system + WiFi upgrade** - Remote maintenance, rapid fault response



### Remote Smart Service

**Real-time system updates** - Automatically obtain the latest treatment guidelines  
**Cloud technical support** - Intelligent diagnosis, reducing equipment downtime





## CLINICAL APPLICATION

### ER



#### Periodontal Therapy

- ✔ **Disinfection with no drug, comfortable treatment** — An optimal choice for Er:YAG laser periodontal therapy.
- ✔ **Precise sterilization, no damage to tissues:** Faster recovery and higher comfort.
- ✔ **Dual advantages:** Laser therapy for periodontitis, integrating sterilization and tissue regeneration.

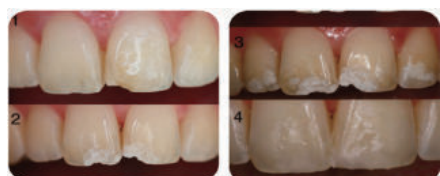
### ER



#### Implant Restoration

- ✔ **Efficient debridement:** Precisely remove inflammatory granulation tissue and diseased epithelium, ensuring thorough treatment.
- ✔ **Friendly to implants:** No mechanical damage, without affecting the surface structure.
- ✔ **Benefits for patients:** Minimal invasive and comfortable, heal quickly, fewer treatment sessions.

### ER



#### Hard Tissue Treatment

- ✔ **Precise caries removal:** Maximize healthy tooth preservation.
- ✔ **Efficient acid etching:** Non-contact enamel conditioning, forming uniform micropores, increasing bonding strength by over 20%.
- ✔ **Crown removal:** Efficiency increased by 300%.

### ER



#### Aesthetic Restoration

- ✔ **Ultra-fast debonding:** Precise veneer removal in 60–120 seconds, efficiency increased by 300%.
- ✔ **No mechanical damage:** Energy directly reaches the resin layer, no damage to tooth structure.
- ✔ **Comfortable & Secure:** Painless and no discomfort, making patients' experience much more comfortable.

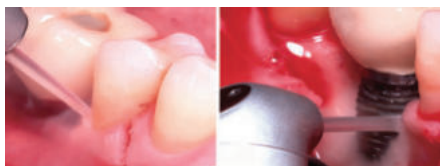
## ER



## Endodontics

- ✔ **Efficient debridement:** Er:YAG laser rapid irrigation, treatment time reduced by 50%, with significantly improved efficacy.
- ✔ **Deep sterilization:** Precisely remove bacteria in dentinal tubules, pulp chamber, and periapical area, eliminating infection thoroughly.
- ✔ **Gentle and minimally invasive:** Vibration-free and heat-free, patients feel no discomfort, with a significantly improved experience.

## DIODE



## Anti-inflammation &amp; Hemostasis



## Physiotherapy



## Teeth Whitening

- ✔ **Anti-inflammation:** Prevent postoperative infection.
- ✔ **Hemostasis:** Accelerates recovery.
- ✔ **Comfortable & Safe:** No acid etching, no irritation.
- ✔ **Suitable for Sensitive Teeth.**



## TECHNICAL PARAMETER TABLE

Parameter	Er:YAG Laser	Diode Laser
Pulse Frequency	1-50Hz	1-20kHz
Wavelength	2940nm	450nm 650nm 980nm
Power	8.4W Max	450nm :3W Max 650nm :0.2W Max 980nm: 8W Max
Pulse Energy	700mJ Max	—
Pulse Width	30µs-700µs	5µs-0.9s
Screen Size	11.6 inches	
Footswitch	Wireless/Wired Compatible	
Machine Size	59×28×77cm	
Equipment Weight	50kg	



# AURORA SOGA WATER ERBIUM YAG LASER SYSTEM



- a. Main unit x1
- b. Erbium laser Fiber x1/O-ring sealing kit x12
- c. Charging adapter x1
- d. Dental Pneumatic Hose x1
- e. Fiber holder x1
- f. Safety lock x1

(Er laser use)



Sapphire tips for dentistry x12

O-ring sealing kit x12



- a. Removal wrench x2
- b. Optical glass mirror x10
- c. Window protection lens x10
- d. Sanitizing kit x2

(Diode laser use)



Fiber tip (8 pcs)

Physiotherapy tip x1

Whitening tip x1

Handpiece cover x1

Cleaner x1

Fiber bender x1



Wireless pedal x1



90° handpiece x1  
120° handpiece x1



Tip holder x1



Protective goggles (Er laser) x3  
Protective goggles (Diode laser) x3



Water funnel x1



User Manual x1



Quick guide x1

# CONTACT US

Together, We Craft Beautiful Smiles  
Your Clients, Our Exceptional Dental Solutions

We value your feedback and are here to assist you. Please don't hesitate to get in touch with us for any inquiries, suggestions, or concerns. We're committed to providing you with excellent service.

 **INTEGRA BEST DEAL**  
**0878-6829-7901**

 **INSTAGRAM**  
**@integra\_dental.id**

 **EMAIL**  
**sales@integrameditama.co.id**

