

CATALOGUE

JOYCAM

DENTAL EQUIPMENT



CATALOGUE

03 WHY DENTAL EQUIPMENT ?

04 JOYCAM

Profile Product Joycam

16 CUSTOMER SUPPORT

Monday - Friday : 8am - 5pm. (GMT +7)
Saturday : 8am - 1pm. (GMT + 7)

OVERVIEW



JOYCAM

WHY DENTAL Equipment?

“Joycam is a high-resolution digital intraoral camera designed for easy documentation and enhanced patient education - right from inside the oral cavity!”

With 4K resolution, Joycam is able to capture caries details, micro-fractures, and restoration conditions with great clarity as a visual communication tool to build patient confidence.



CATALOGUE

OVERVIEW

JOYCAM



HIGH RESOLUTION

17 INCH TOUCH SCREEN+INTRA ORAL CAMERA ALL IN ONE

Work Smarter. Relax Brighter!
4K Dental Clarity meets Entertainment

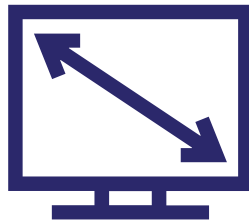


1080p High Resolution | Touchscreen | Intelligent system Operation

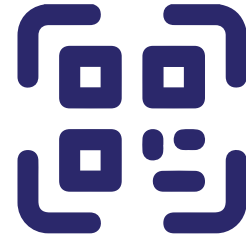
RP 6.697.000



1080p
High Resolution



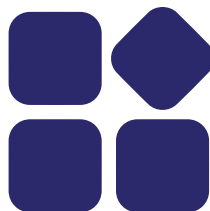
17 Inch high pixel
easy to solve
the doctor-patient
relationship



Scan QR Code
download picture



Touchscreen
Finger touch screen



Multifunction
Multi-function
touch button



Mini Lens
6mm ultra-thin lens

WIFI Scan QR Code to download pictures



Images are saved to the phone's mobile album directly, which can be sent to patients or customers or can be downloaded by scanning the QR code as well

Super mini lens

6mm thickness lens is easy to take care of the whole mouth and most groups of young children



IMPORTED SENSOR COMPONENTS

CMOS HD sensor
1080P ultra-high pixel,
auto focus

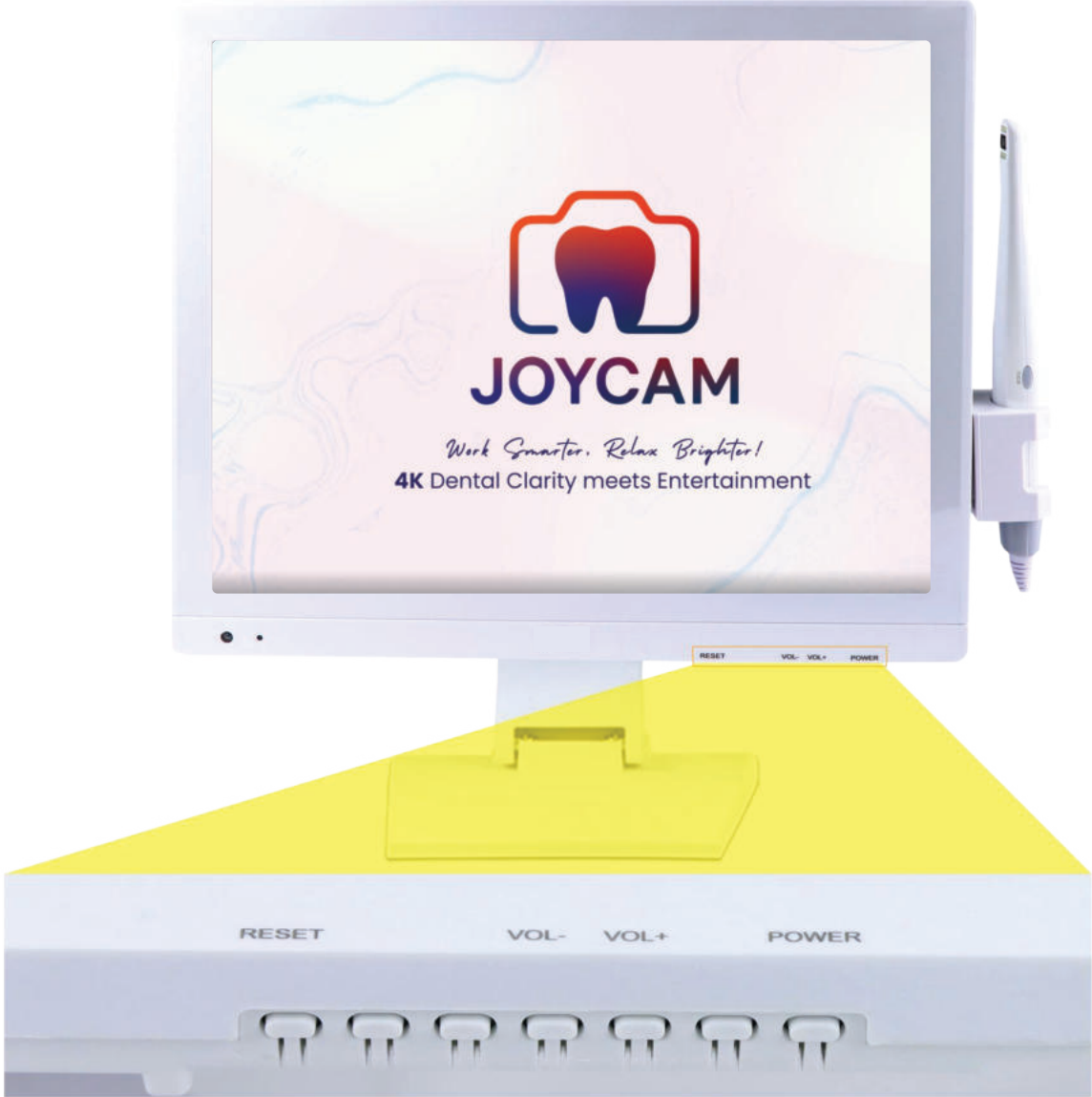


Finger Touch Screen

High sensitivity touch, extremely fast and enjoyable work



Front

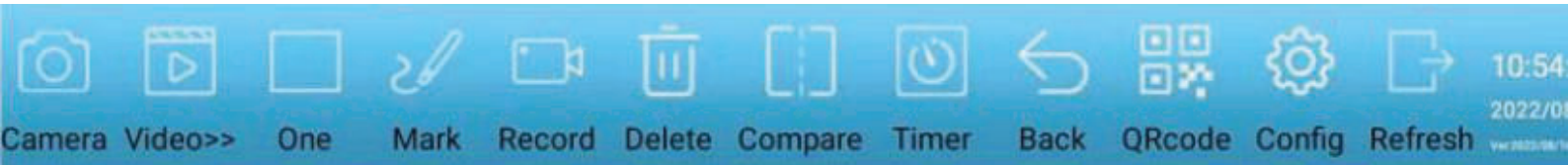


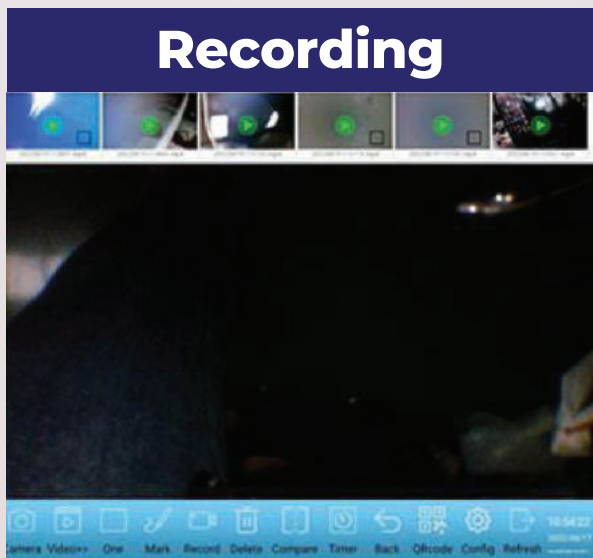
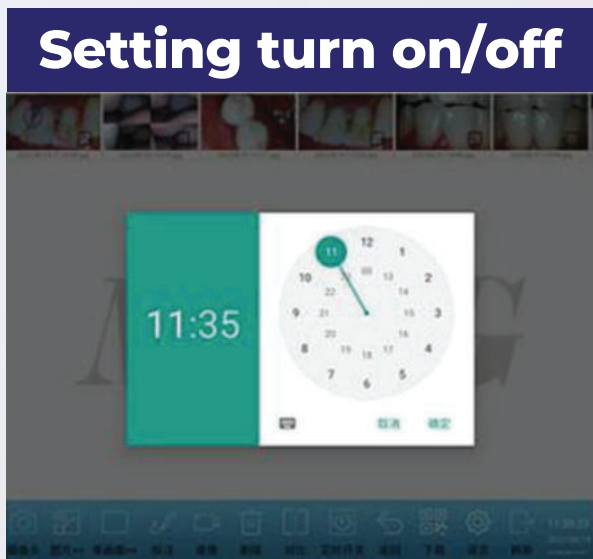
Multifunctional operation

Easy to operate

Intelligent

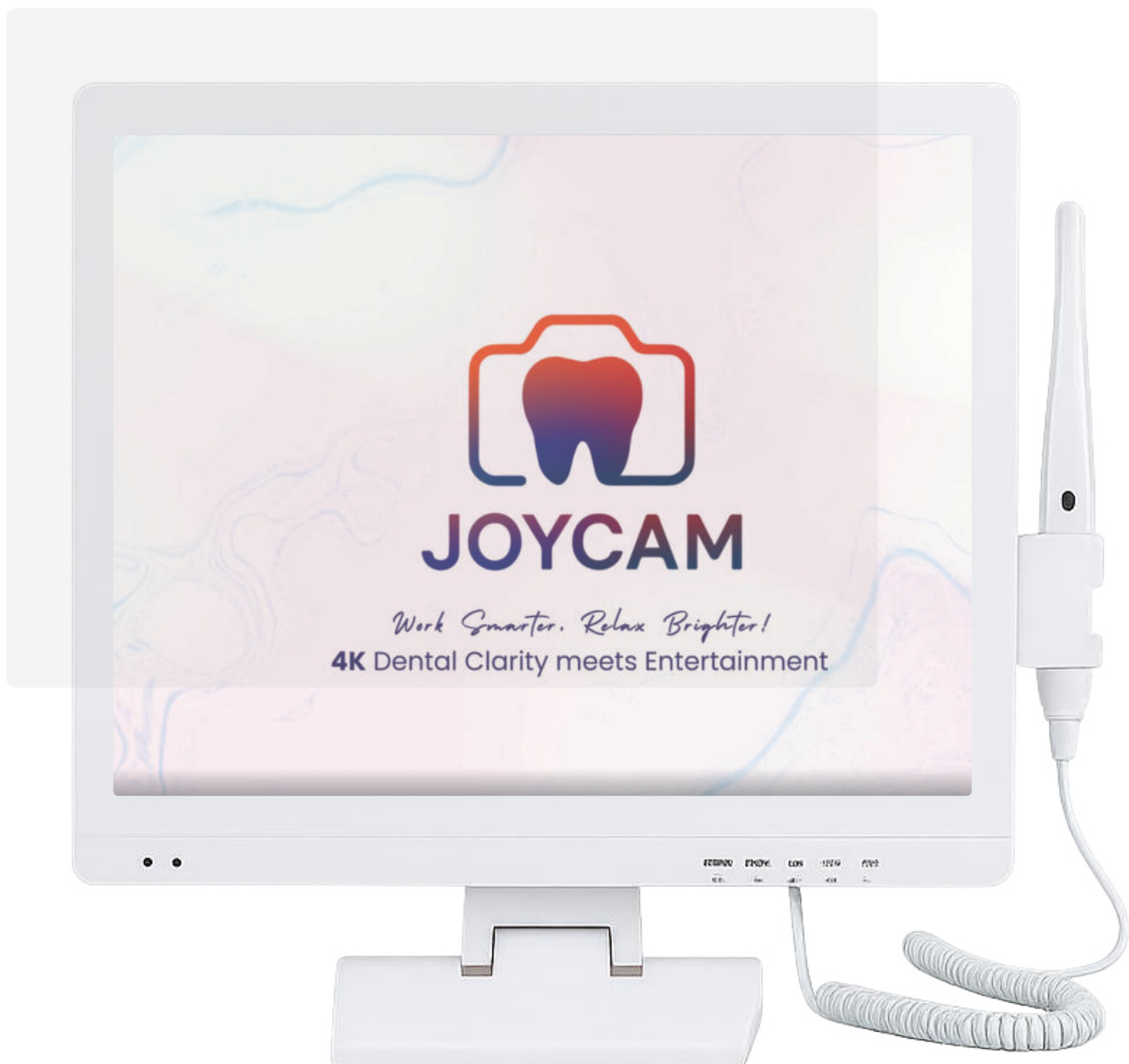
High performance





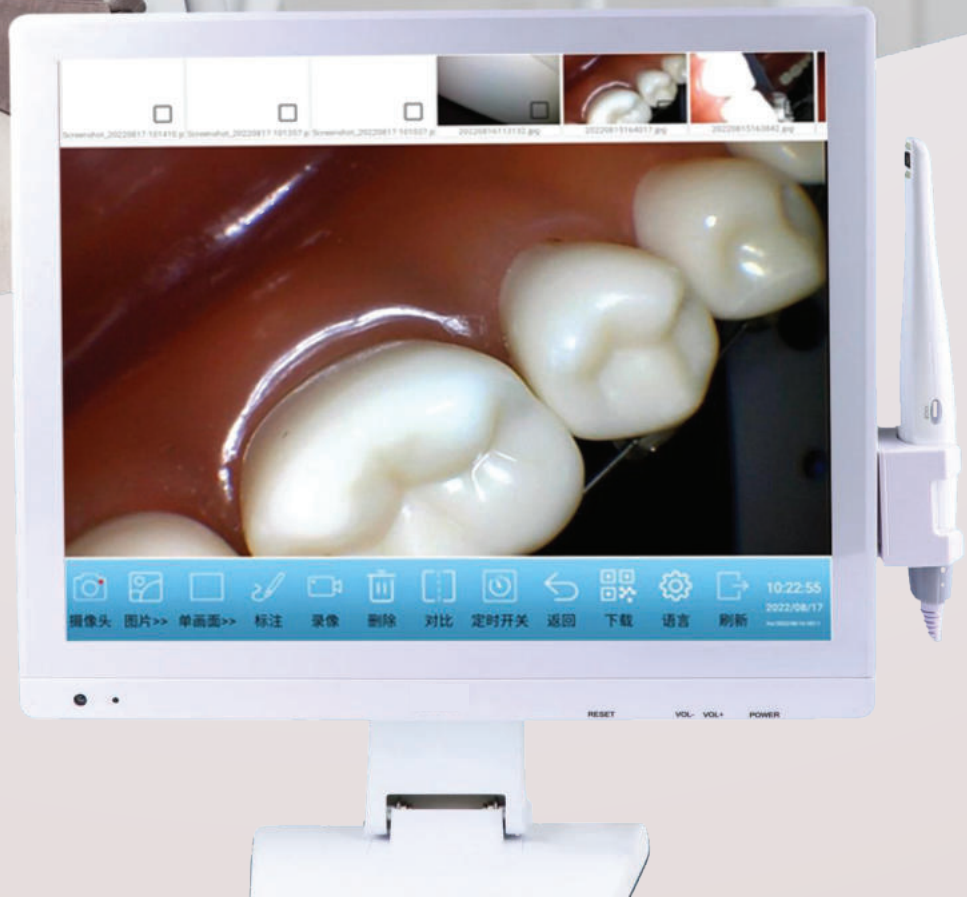
Thickened tempered glass monitor

Prevent water stains from entering the screen during the cleaning and flushing operation, affect the clarity of picture and component life

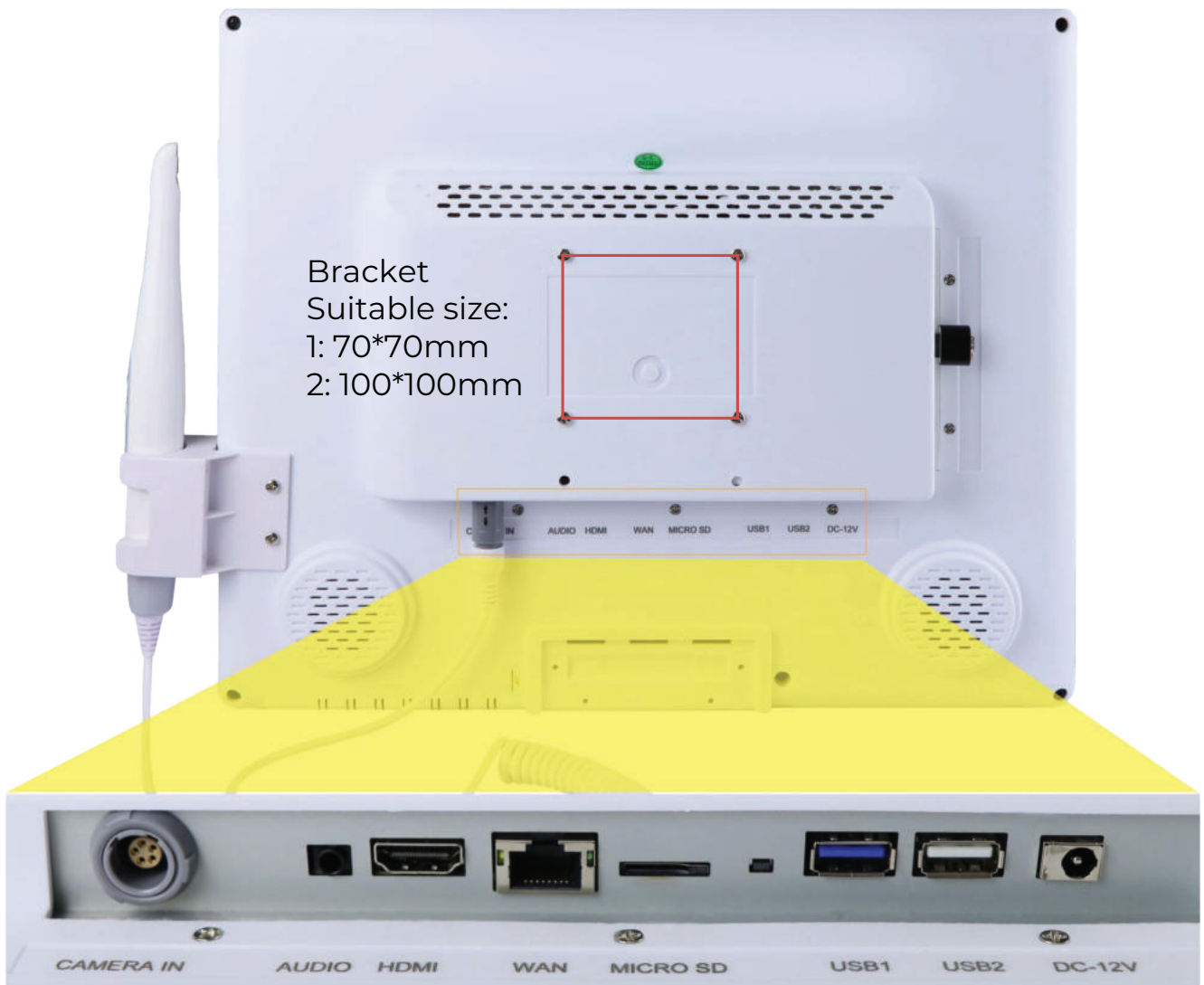


Desktop & hanging dual-use

can be fixed to the dental chair or placed on the table



Back



Side



Product specification: PRODUCT TECHNICAL PARAMETERS

Power supply: USB 5V
Resolution : 1920*1080
Output format: UVC
Size : 385*335*45MM(not include base)
Voltage: DC 12V

Electric current: 2.1A
Power: 25W
Monitor size: 17 inch
Storage : USB disk



CONTACT US

Together, We Craft Beautiful Smiles
Your Clients, Our Exceptional Dental Solutions

We value your feedback and are here to assist you. Please don't hesitate to get in touch with us for any inquiries, suggestions, or concerns. We're committed to providing you with excellent service.

